



Mednav Group

Lisca Nera M



Vessel's Name	LISCA NERA M
Port of Registry	Catania
Where Built	Costanta Shipyard, Costanta (Rumenia)
Year Built	2009
Flag	Italian
Owner	Augusta Due S.r.l.
Lenght overall	179.96
Lenght pp	172.00
Bread moulded	32.20
Depth	16.50
SDWT	42000
Scantling Draught	11.00
Gross Tonnage	25804
Net Tonnage	11396
TPC (Tons/cm)	52.5 M/cm
Speed (Knots)	13.0
Class	RINA + GL (Dual); C ⚡ Chemical Tanker ESP; Oil Tanker ESP; Double Hull; Unrestricted navigation

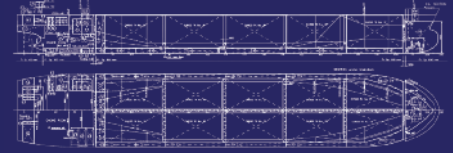
PRODUCT / CHEMICAL TANKER

42000 DWT

DOUBLE HULL

SBT

IMO II



Additional Class Notation	AUT-UMS; CARGO CONTROL; CLEAN AIR; ICE; INWATER SURVEY; MON-SHAFT; SPM; VCS-MIDSHIP; AUT-PORT
Cargo Tanks	10
Slop Tanks	2
Cargo Capacity cbm 100%	47776.2
Slop Tanks Capacity	1000.6
Cargo/Slop Tanks	Coated (epoxy)
Cargo Segregation	5 + 1
Cargo Hose Handling Crane	10 Tons
Cargo Manifolds	5 per side
Stern Discharge Line	10"
Cargo Manifolds Reducers	10 x 400/300 - 4 x 300/254 - 4 x 300/200 - 4 x 300/300
Cargo Heating	Steam
Tank Cleaning	Fixed Tank Cleaning Machine
Inert Gas System	Fitted
Cargo Pumps	10+2 Deep Well FRAMO
Capacity	10 x 500 CM/hours – 2 x 200 CM/hours
Max Discharging Rate	2000 CM/Hours
Main Engines	MAN B&W 6S50MC
Bow Thruster	Power 1155 Hp
Oil Boiler	Yes
Exhaust Gas Economizer	Yes / Combi