



Mednav Group

Vulcanello M

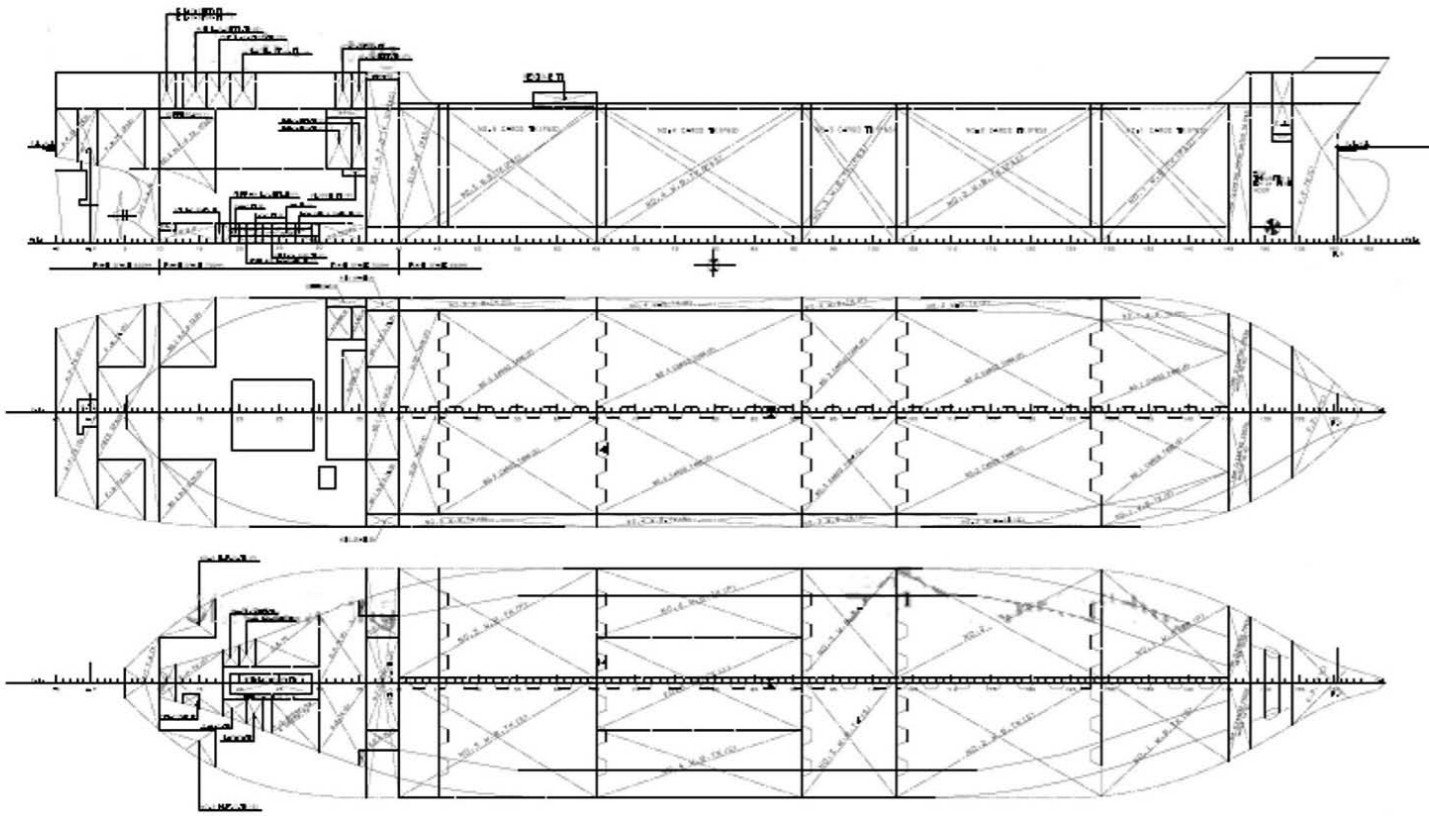
Mednav  Group

**AUGUSTA DUE S.R.L.**

**Ufficio Amm.vo/Ufficio Tecnico/Ufficio Acquisti/Ufficio Operativo:** Piazza di S. Costanza, 5 - 00198 Roma  
Tel. 06 8537821 - Fax 06 85378251 - info@augustadue.it

**Ufficio Finanziario:** Via Guaccimanni, 13 - 48100 Ravenna  
Tel. 0544 216467 - Fax 0544 216473 - info@mednavaugustadue.191.it





# Vulcanello M

<b>Vessel's Name</b>	VULCANELLO M	PRODUCT / CHEMICAL TANKER
<b>Port of Registry</b>	Catania (Italy)	11000 DWT
<b>Where Built</b>	STX SHIPBUILDING Co., Pusan (Korea)	DOUBLE HULL
<b>Year Built</b>	2006	SBT
<b>Flag</b>	Italy	IMO III
<b>Owner</b>	Augusta Due S.R.L.	
<b>Lenght overall</b>	116.50 Mtr	
<b>Lenght pp</b>	109.00	
<b>Bread moulded</b>	20.0	
<b>Depth</b>	11.70	
<b>SDWT</b>	11288 Ton.	
<b>Scantling Draught</b>	8.40	
<b>GT</b>	7687	
<b>NT</b>	3266	
<b>Light-ship</b>	40.4 Mtr	
<b>TPC (metric tons)</b>	20.65	
<b>Speed (Knots)</b>	About 13.6/14.6	
<b>Classification Society</b>	RINA	
<b>Additional Class Notation</b>	LLOYDS REGISTER	
<b>Cargo Tanks</b>	10	
<b>Slop Tanks</b>	2	
<b>Cargo Capacity cbm 100%</b>	4072.7	
<b>Slop Tanks Capacity</b>	165.4	
<b>Cargo/Slop Tanks</b>	4238.1	
<b>Cargo Segretation</b>	5	
<b>Cargo Hose Handling Crane</b>	SWL 5T X 3.2 - 17.5 MTR	
<b>Cargo Manifolds</b>	5 per side	
<b>Stern disch, Line</b>	Yes	
<b>Cargo Manifolds Reducers</b>	1 x 150/200MM - 4 x 200/250MM - 1 x 250/300MM - 2 x 150/150MM 8 x 200/200MM	
<b>Cargo Heating</b>	Steam	
<b>Tank Cleaning</b>		
<b>Inert Gas System</b>	Fitted	
<b>Cargo Pumps</b>	10x 300 Cu. metres/hours (centrifugal) - cargo 2 x 100 Cu. metres/hours (centrifugal) - slop	
<b>Capacity</b>		
<b>Max Loading Rate</b>	1320 cm/hours	
<b>Main Engines</b>	STX-MAN B&W 6835MC-MK7 2 STROKE	
<b>Bow Thruster</b>	FRAMO 450 KW	
<b>Oil Boiler</b>	Fitted	
<b>Exhaust Gas Economizer</b>	Fitted	

